

# MONTHLY MEMBERSHIP PROGRESS REPORT

District 2 A1

Results as of: 10/31/2019

GMT:

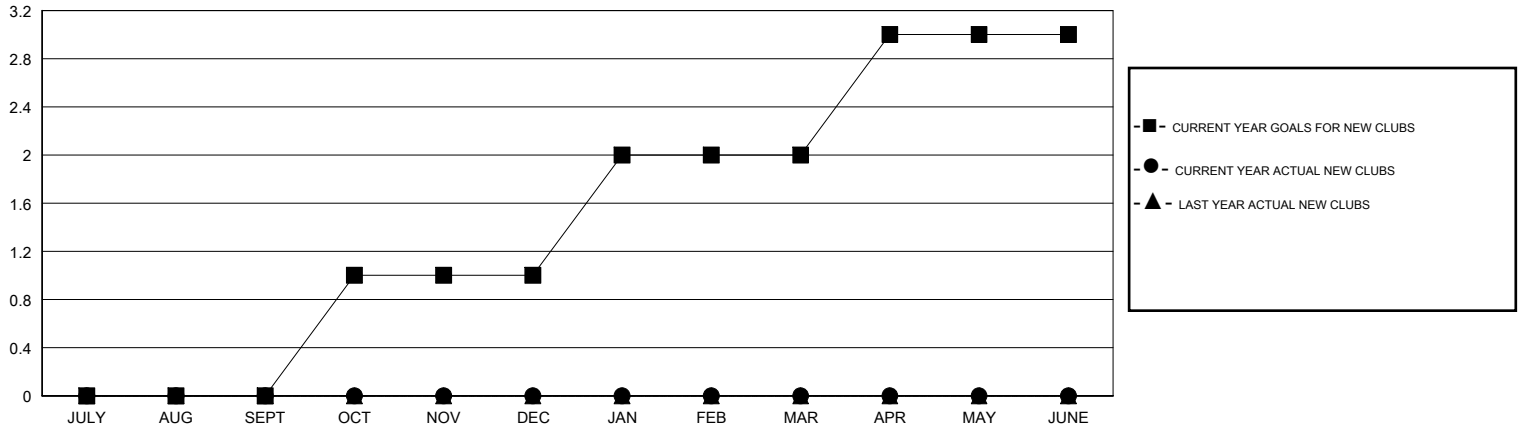
LOCATION TEXAS

GMT CA

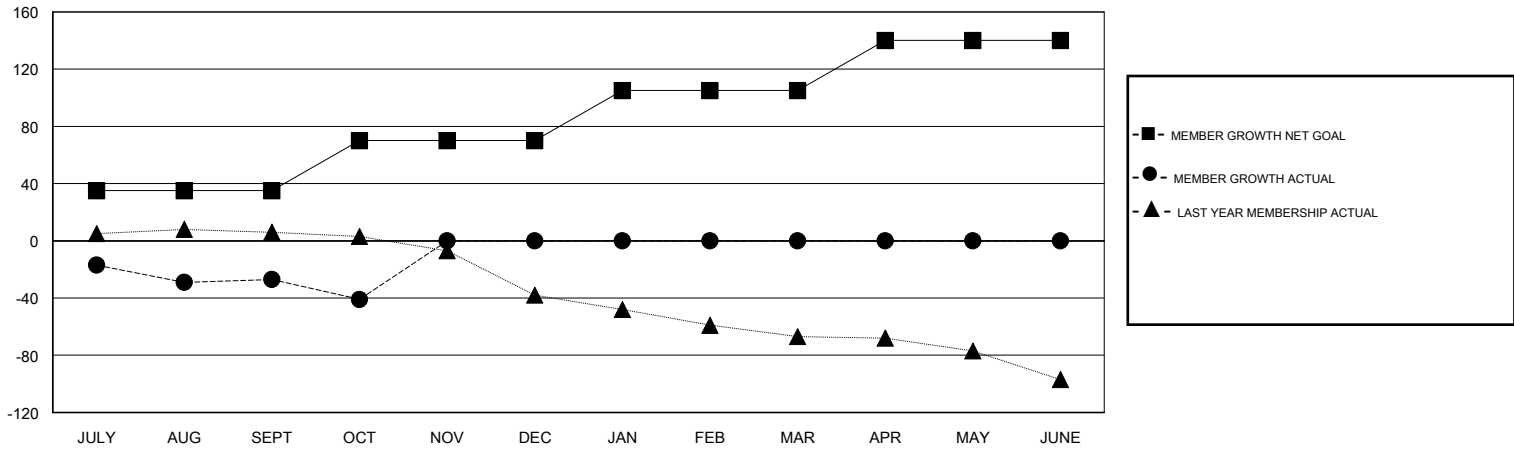
Clubs			
RESULTS FOR 2019-2020			
QUARTER	NEW CLUB GOAL	NEW CLUBS	DROPPED CLUBS
JULY/AUG/SEPT	0	0	0
OCT/NOV/DEC	1	0	1
JAN/FEB/MAR	1	0	0
APR/MAY/JUNE	1	0	0

Members			
RESULTS FOR 2019-2020			
QUARTER	MEMBER GROWTH NET GOAL	MEMBER GROWTH ACTUAL	DROPPED MEMBERS ACTUAL (including transfers)
JULY/AUG/SEPT	35	29	53
OCT/NOV/DEC	35	18	32
JAN/FEB/MAR	35	0	0
APR/MAY/JUNE	35	0	0

GOALS AND ACTUAL NEW CLUBS CUMULATIVE



GOALS AND ACTUAL MEMBERS CUMULATIVE



DROPPED CLUBS: 1	21 CLUBS OF 47 ADDED 1 OR MORE NEW MEMBERS	<u>GENDER DISTRIBUTION</u>	
DROPPED MEMBERS		MALE	821 (66.26%)
DECEASED	8	FEMALE	418 (33.74%)
CLUB CANCELLED	15	TOTAL FAMILY UNIT MEMBERS	
OTHER	62	158	
TOTAL	85	FAMILY MEMBERS PAYING HALF DUES	
		81	

[CLICK HERE FOR CUMULATIVE MEMBERSHIP DATA](#)